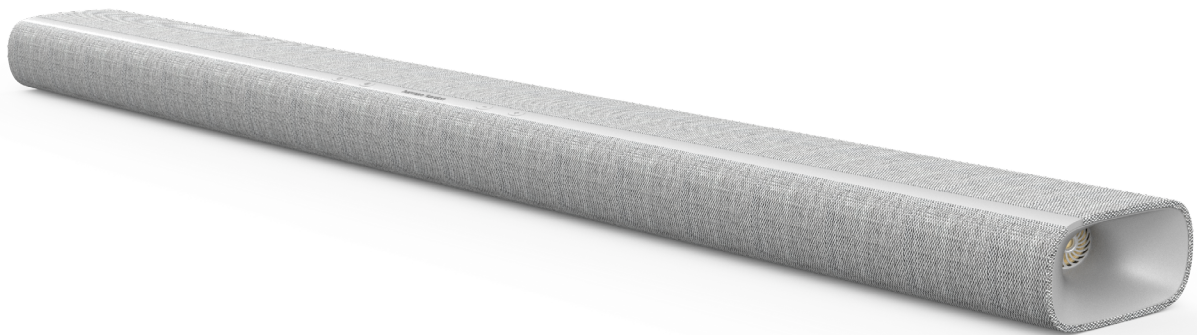


# CITATION MULTIBEAM 1100



## OWNER'S MANUAL

# / IMPORTANT SAFETY INSTRUCTIONS

## **Verify Line Voltage Before Use**

The CITATION MULTIBEAM 1100 soundbar has been designed for use with 100-240 volt, 50/60 Hz AC current. Connection to a line voltage other than that for which your product is intended can create a safety and fire hazard and may damage the unit. If you have any questions about the voltage requirements for your specific model or about the line voltage in your area, contact your selling dealer before plugging the unit in to a wall outlet.

## **Do Not Use Extension Cables**

To avoid safety hazards, use only the power cable supplied with your unit. We do not recommend that extension cables be used with this product. As with all electrical devices, do not run power cables under rugs or carpets, or place heavy objects on them. Damaged power cables should be replaced immediately by an authorized service center with a cable that meets factory specifications.

## **Handle the AC Power Cable Gently**

When disconnecting the power cable from an AC outlet, always pull the plug; never pull the cable.

If you do not intend to use your speaker for any considerable length of time, disconnect the plug from the AC outlet.

## **Do Not Open the Cabinet**

There are no user-serviceable components inside this product. Opening the cabinet may present a shock hazard, and any modification to the product will void your warranty. If water accidentally falls inside the unit, disconnect it from the AC power source immediately, and consult an authorized service center.

# / TABLE OF CONTENTS

IMPORTANT SAFETY INSTRUCTIONS .....	2
INTRODUCTION .....	4
WHAT'S IN THE BOX .....	5
PRODUCT OVERVIEW.....	6
PLACE .....	11
CONNECT .....	14
SETUP .....	29
SETTING UP OTHER CITATION SPEAKERS (OPTIONAL).....	35
PLAY .....	37
SOUND SETTINGS .....	48
RESTORE FACTORY SETTINGS .....	50
SOFTWARE UPDATE.....	51
PRODUCT SPECIFICATIONS .....	53
TROUBLESHOOTING .....	55
TRADEMARKS.....	60

# / INTRODUCTION

This manual includes information of the Harman Kardon Citation MultiBeam 1100 (soundbar). We encourage you to take a few minutes to read this manual, which describes the product and includes step-by-step instructions to help you set up and get started. Read and understand all the safety instructions before using your product.

**This product may have an important software update available. Please follow the instructions to connect the product to Wi-Fi to ensure that your product has the most recent software updates.**

Design and specifications are subject to change without notice. Some features require subscriptions or services not available in all countries.

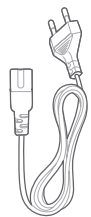
If you have any questions about this product, its installation or its operation, please contact your Harman Kardon retailer or customer service, or visit us at [www.harmankardon.com](http://www.harmankardon.com)

# WHAT'S IN THE BOX

Carefully unpack the box and check if the following parts are included. If any part is damaged, do not use it, contact your Harman Kardon retailer or customer service.



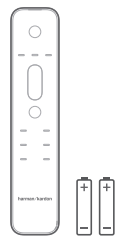
1



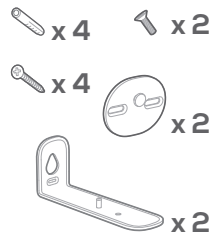
2



3



4



5

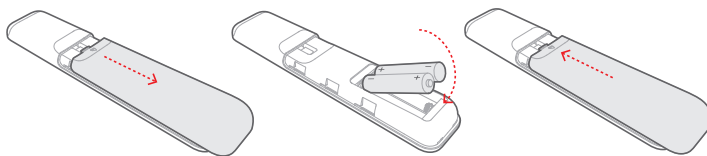


6

1. Main unit
2. Power cable\*
3. HDMI cable
4. Remote control (with 2 AAA batteries)
5. Wall-mounting kit
6. Product information & wall-mounting template

\*Power cable quantity and plug type vary by regions.

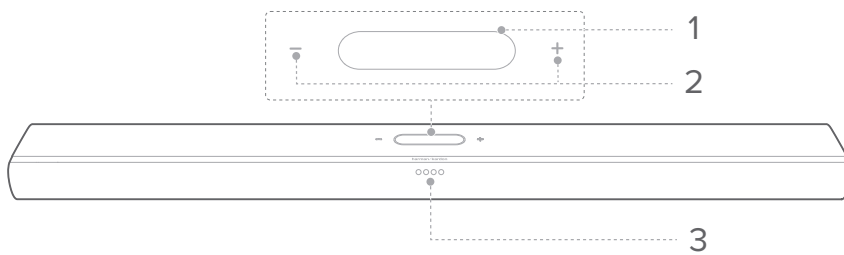
Insert batteries before using the remote control (AAA batteries x 2)



Slide the battery cover in the direction of the arrow until it is completely removed. Insert 2 AAA batteries (1.5 V) oriented so that their polarity is correct. Slide the battery cover back into position.



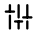



# PRODUCT OVERVIEW

## Front Panel & Top Panel



### 1. Touch screen

- Swipe up / down to switch between the main screens.
- Tap an icon to select.
- Tap ← to return to the previous screen, tap → to go to the next screen.

	Wi-Fi signal indicator.
	Tap to select a source (TV / HDMI IN / Bluetooth).
	Tap to customize the audio settings.
	Tap to customize the general settings.
	Tap to customize the speaker settings.
	Tap to check the system information of this product.

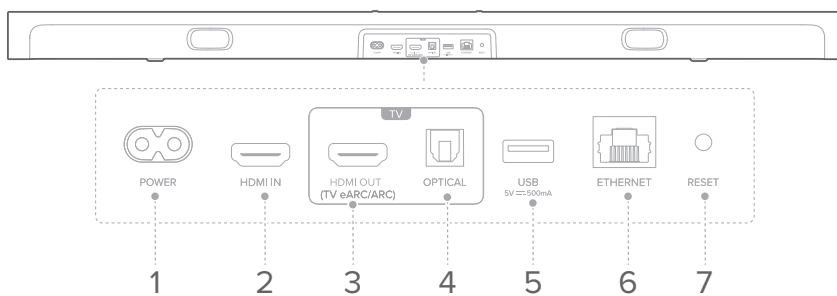
### 2. - / + (Volume)

- Press to decrease or increase the volume.
- Press both simultaneously to mute the soundbar audio.

### 3. LED indicators

TV		Solid white for 3 seconds	TV source selected
HDMI		Solid white for 3 seconds	HDMI source selected
Bluetooth		Flashing blue quickly	Bluetooth pairing
		Solid blue	Bluetooth connected
		Flashing blue slowly	Bluetooth not connected
Bass / treble adjustment		Solid white	-2
			-1
			0
			+1
			+2
ATMOS		Solid white	Level 3
		Half brightness	Level 2 (default)
		Low brightness	Level 1
SURROUND		Solid white	Level 3
		Half brightness	Level 2 (default)
		Low brightness	Level 1
		Dimmed	Level 0
Calibration		Scrolling white	Calibration in progress
		Solid white for 3 seconds	Calibration done
		Flashing white slowly	Calibration failed

## Back Panel



### 1. POWER

- Connect to the power cable.

### 2. HDMI IN

- Connect to the HDMI output on your digital device.

### 3. HDMI OUT (TV eARC/ARC)

- Connect to the HDMI (eARC/ARC) input on your TV.

### 4. OPTICAL

- Connect to an optical audio output on your TV or a digital device.

### 5. USB

- USB connector for software update.

### 6. ETHERNET

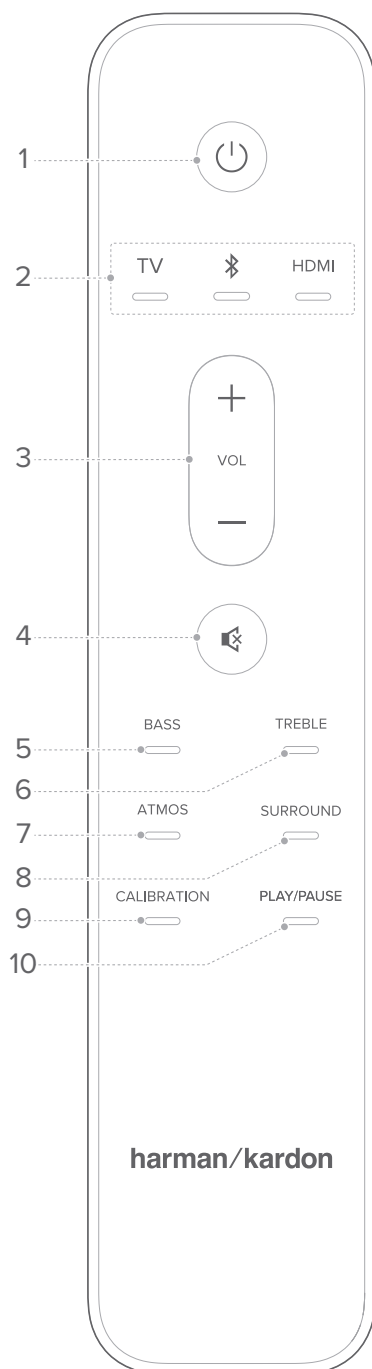
- Connect to your home network through an Ethernet cable.

### 7. RESET

- Press and hold for 5 seconds to restore the factory settings.



## Remote Control



### 1. (Power)

- Power on or switch to standby.

### 2. Sources

- Select an input source for the soundbar: **TV / Bluetooth / HDMI**.
- Press and hold to pair with a new device.

### 3. VOL + / -

- Increase or decrease the volume level.

### 4.

- Mute or unmute the soundbar audio.

### 5. BASS

- Adjust the bass level of the soundbar or subwoofer (if connected).

### 6. TREBLE

- Adjust the treble level of the soundbar.

### 7. ATMOS

- Select the level of Dolby Atmos effect: 1, 2 (default) or 3.

### 8. SURROUND

- Soundbar only: Enable or disable Smart Surround (See "[Smart Surround](#)").
- With optional Citation Surround: Adjust the rear surround speaker level.

## 9. CALIBRATION

- Press twice to optimize your 3D surround sound experience for your unique listening environment.

## 10. PLAY/PAUSE

- Pause or resume playback for Bluetooth or Wi-Fi music.
- Press twice to skip to the next track.
- Press three times to skip to the previous track.

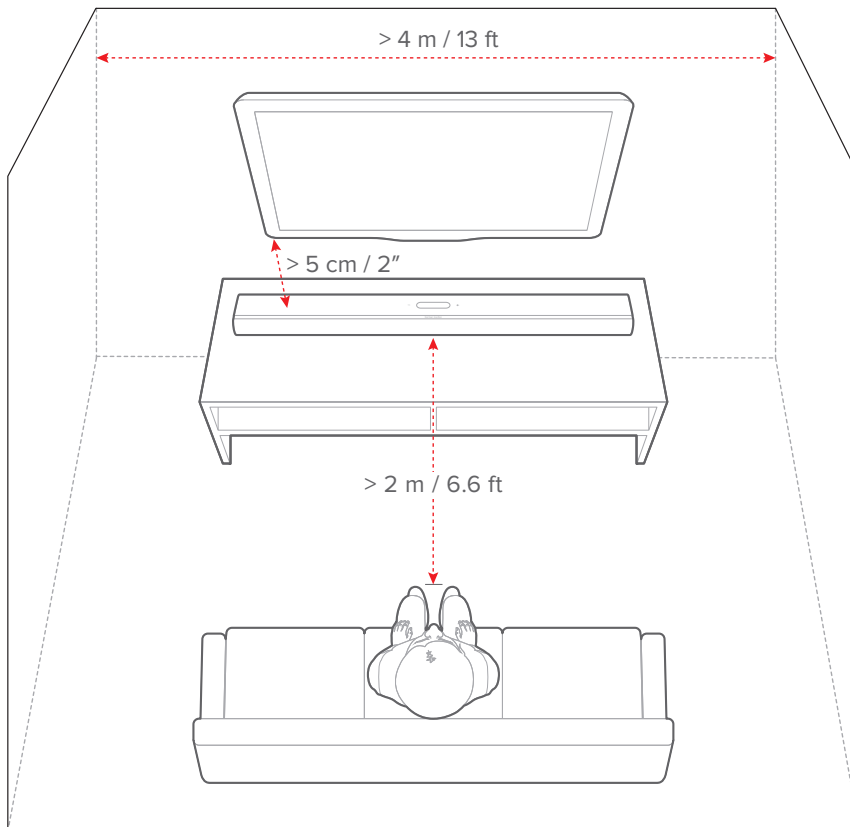
### NOTE:

- Not all Wi-Fi music services may support Play/Pause controls.

# / PLACE

## Desktop placement

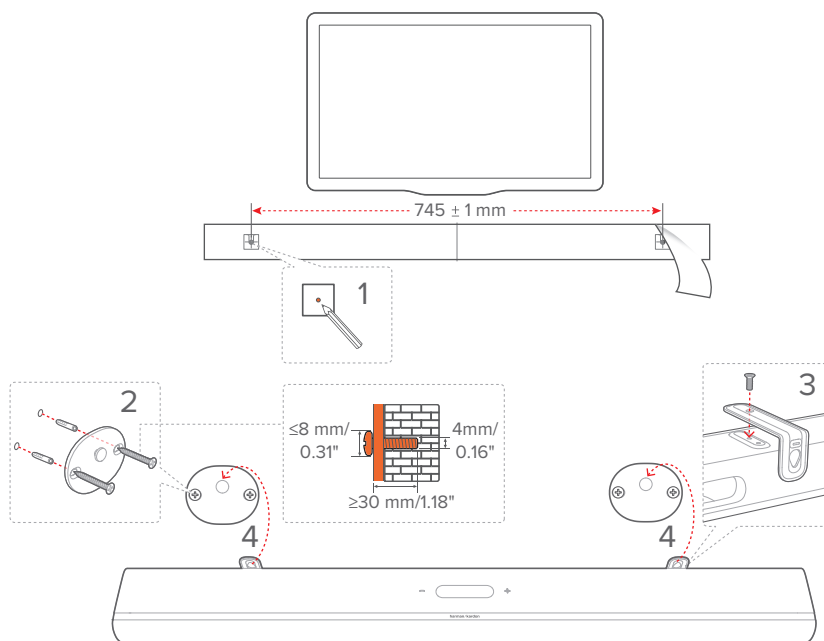
Place the soundbar on a flat and stable surface.



### NOTES:

- The power cable shall be properly connected to power.
- Do not place any objects on the top of the soundbar.

## Wall-mounting



- 1) Preparation:
  - a) With a minimum distance of 2" (5 cm) from your TV, stick the supplied wall-mounting template to a wall by using adhesive tapes.
  - b) Use your ballpen tip to mark the screw holder location. Remove the template.
  - c) On the marked location, drill a 4 mm/0.16" hole.
- 2) Install the support for wall-mounting bracket.
- 3) With the screw, fasten the wall-mounting bracket onto the bottom of the soundbar.
- 4) Mount the soundbar.

**NOTES:**

- Make sure that the wall can support the weight of the soundbar.
- Install on a vertical wall only.
- Avoid a location under high temperature or humidity.
- Before wall-mounting, make sure that cables can be properly connected between the soundbar and external devices.
- Before wall-mounting, make sure that the soundbar is unplugged from power. Otherwise, it may cause an electric shock.

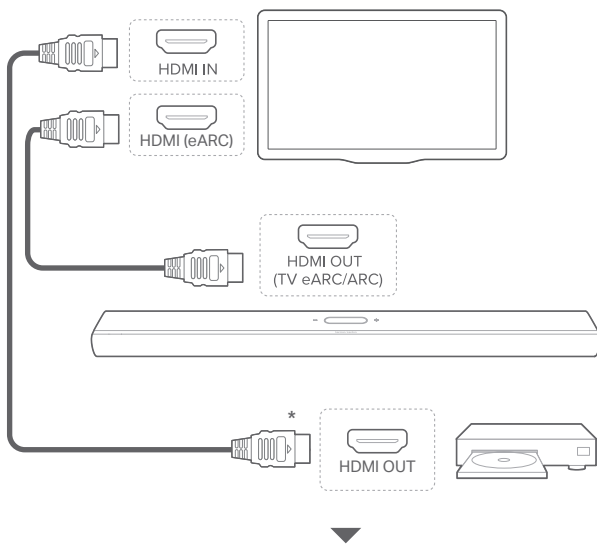
# / CONNECT

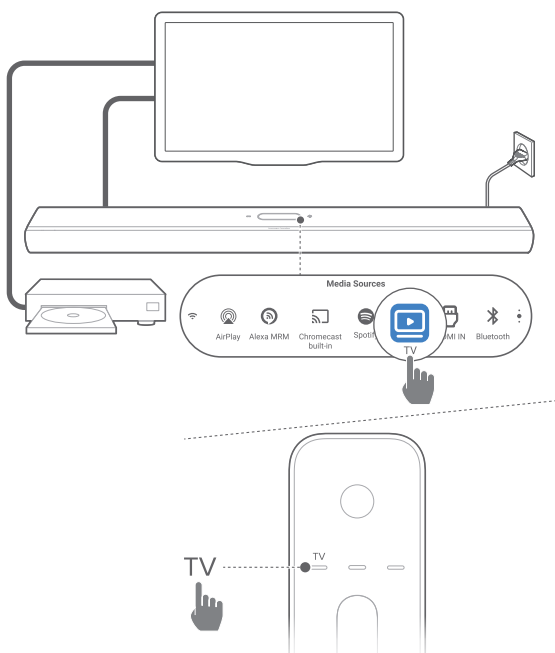
## Connection with your TV and digital devices

For audio playback through the soundbar, connect the soundbar with your TV through the supplied HDMI cable or an optical cable (sold separately).

An HDMI connection supports digital audio and video with a single connection. HDMI connectivity is the best option for your soundbar.

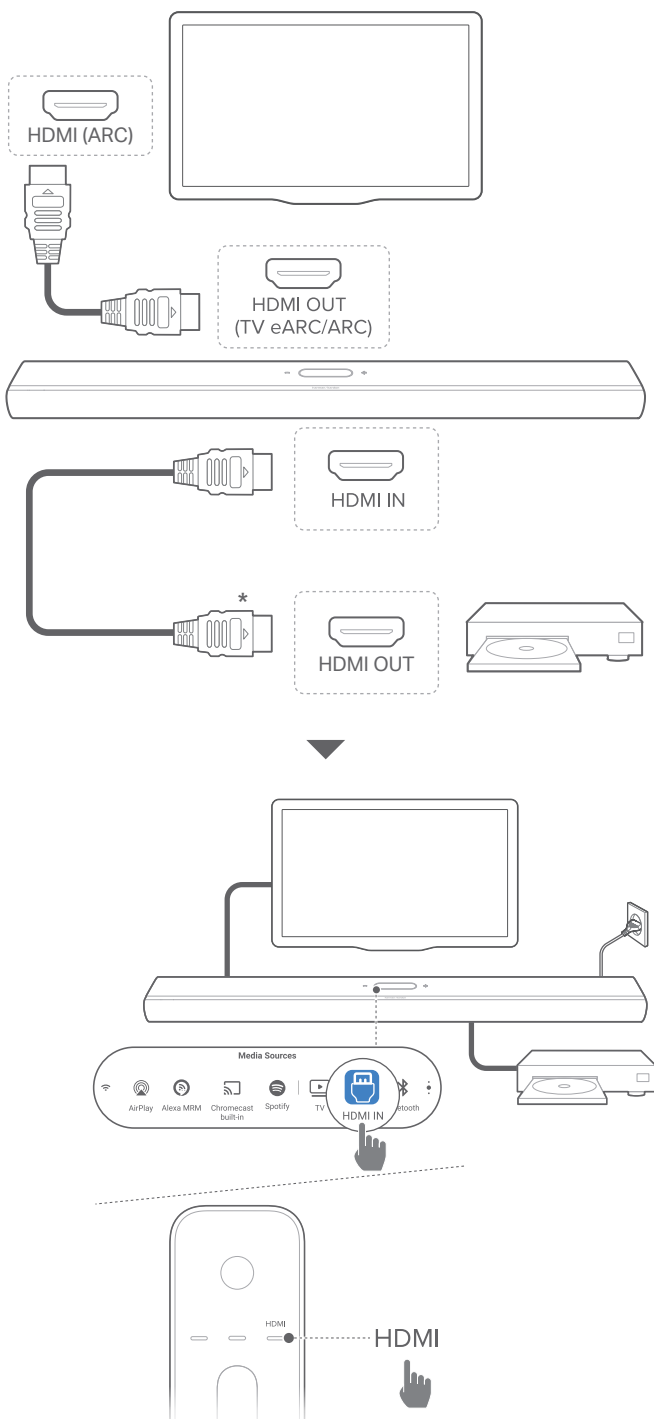
### HDMI eARC





- 1) Connect the soundbar with the **HDMI IN (eARC)** connector on your TV by using the supplied HDMI cable.
  - On your TV, check that HDMI-CEC and HDMI eARC have been enabled. Refer to the owner's manual of your TV for more information.
- 2) Use an HDMI cable (eARC compatible, V2.0 or later) to connect your TV with your digital device, such as a streaming device, set-top box, DVD/Blu-ray player or game console.
  - On your digital device, check that HDMI-CEC has been enabled. Refer to the owner's manual of your digital device for more information.
  - On your TV and digital device, select "Bitstream" or "Raw data" in the audio output settings for the best Dolby Atmos experience.
- 3) To play audio from the digital device connected to your TV, switch on the soundbar (see "[Power-on/Auto standby/Auto wakeup](#)") and select the **TV** source.

## HDMI ARC



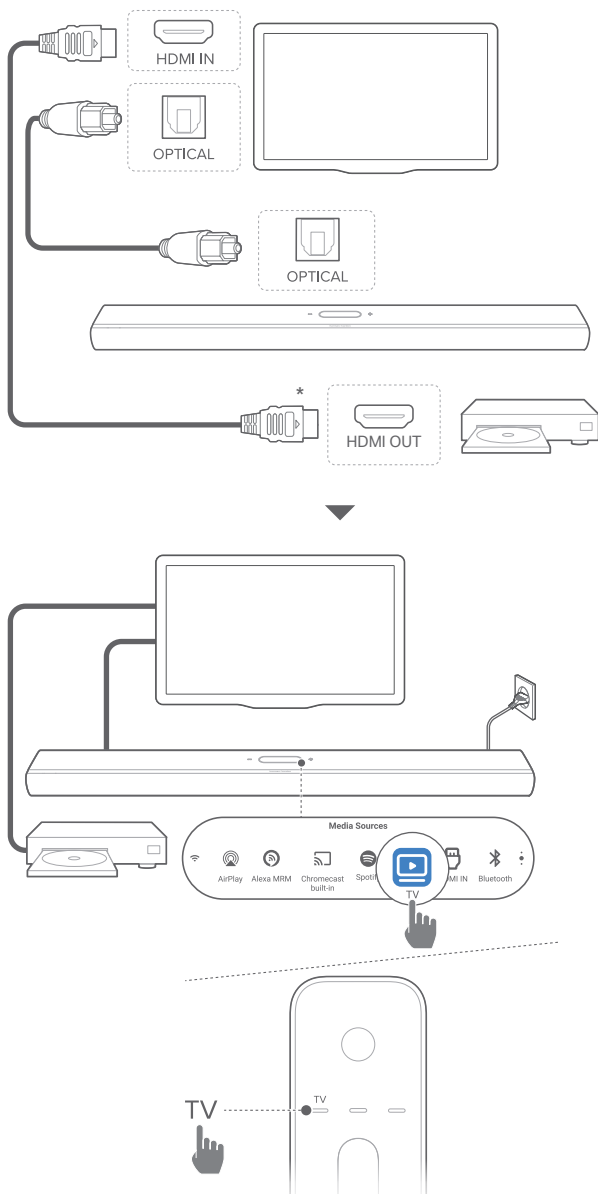


- 1) Connect the soundbar with the HDMI IN (ARC) connector on your TV by using the supplied HDMI cable.
  - On your TV, check that HDMI-CEC and HDMI ARC have been enabled. Refer to the owner's manual of your TV for more information.
- 2) Use an HDMI cable (V2.0 or later) to connect the soundbar with your digital device, such as a set-top box, DVD/Blu-ray player or game console.
  - On your digital device, check that HDMI-CEC has been enabled. Refer to the owner's manual of your digital device for more information.
  - On your digital device, select "Bitstream" or "Raw data" in the audio output settings for the best Dolby Atmos experience.
- 3) To play audio from the digital device connected to the soundbar, switch on the soundbar (see "[Power-on/Auto standby/Auto wakeup](#)") and select the **HDMI** source.

**NOTE:**

- If your TV does not support HDMI eARC, make sure that you connect your digital device through the HDMI IN connector on the soundbar instead of your TV. Otherwise, the Dolby Atmos information cannot pass through the HDMI (ARC / eARC) connectors to the soundbar.

OPTICAL



NOTE:

- With the Dolby Atmos design, the Dolby surround upmixer of the soundbar can expand the legacy channel-based audio of Dolby Digital format, including 5.1 and 7.1 content, and provide an immersive 3D Atmos experience.

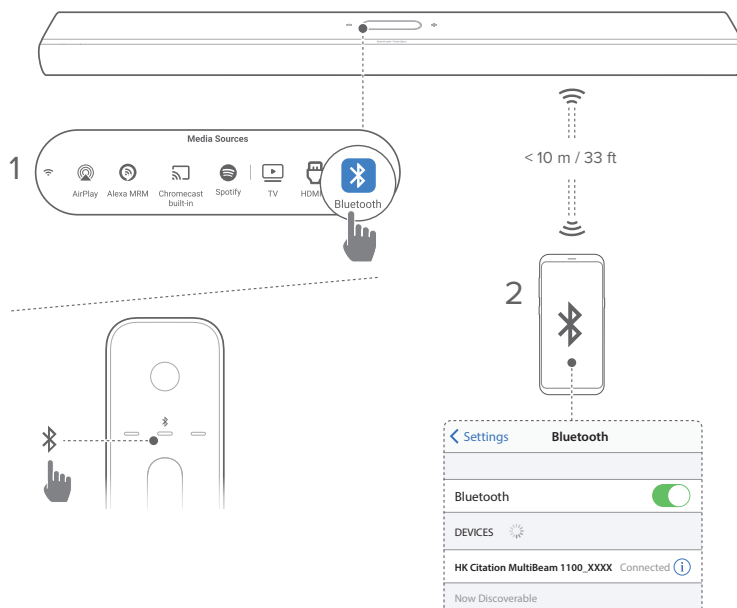
- 1) Connect the soundbar with your TV by using an optical cable.
- 2) Use an HDMI cable (V2.0 or later) to connect your TV with your digital device, such as a streaming device, set-top box, DVD/Blu-ray player or game console.
- 3) To play audio through the optical cable, switch on the soundbar (see “[Power-on/Auto standby/Auto wakeup](#)”) and select the **TV** source.

#### NOTES:



- The HDMI cable (for digital device connection) and the optical cable are sold separately.
- Full compatibility with all HDMI-CEC devices is not guaranteed.
- When both HDMI eARC/ARC and optical cables are connected to the soundbar for audio input from TV connection, the HDMI eARC /ARC connection is prioritized.

## Bluetooth connection

Through Bluetooth, connect the soundbar with your Bluetooth device, such as a smartphone, tablet and laptop.



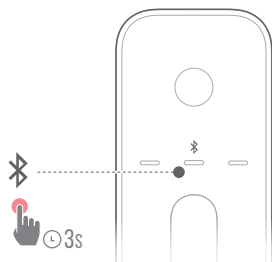
## Connect a Bluetooth device


- 1) Switch on the soundbar (see [“Power-on/Auto standby/Auto wakeup”](#)).
- 2) To select Bluetooth source, tap  on the touch screen or press  on the remote control.
  - The 2<sup>nd</sup> LED flashes blue quickly.
- 3) On your Bluetooth device, enable Bluetooth and search for **“HK Citation MultiBeam 1100\_XXXX”** within three minutes.
  - Successful connection: The 2<sup>nd</sup> LED turns solid blue and you can hear a confirmation tone.

## To reconnect the last paired device

Your Bluetooth device is retained as a paired device when the soundbar goes to standby mode. Next time you switch to the Bluetooth source, the soundbar reconnects the last paired device automatically.

## To connect to another Bluetooth device



- 1) In the Bluetooth source, hold  on the touch screen or remote control until the 2<sup>nd</sup> LED flashes blue quickly.
  - The previously paired device is cleared from the soundbar.
  - The soundbar enters the Bluetooth pairing mode.

- 2) Follow the Step 3 under [“Connect a Bluetooth device”](#).
  - If the device has ever been paired with the soundbar, first unpair “**HK Citation MultiBeam 1100\_XXXX**” on the device.

**NOTES:**

- The Bluetooth connection will be lost if the distance between the soundbar and Bluetooth device exceeds 33 ft (10 m).
- Electronic devices may cause radio interference. Devices that generate electromagnetic waves must be kept away from the Soundbar, such as microwaves and wireless LAN devices.

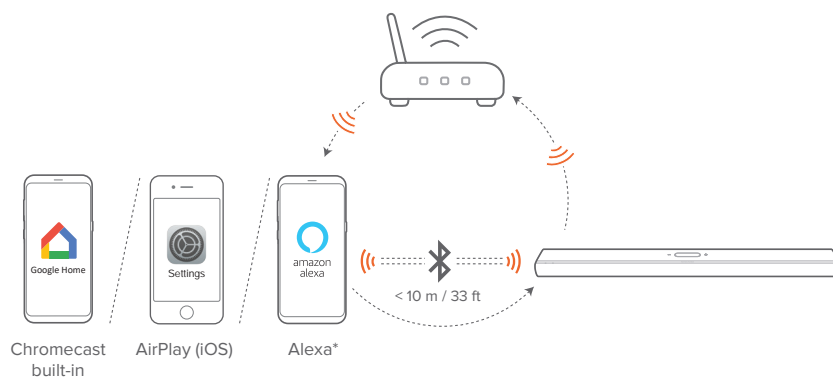
## Connection with your home network

Through Wi-Fi or an Ethernet cable, connect the soundbar to your home network. With Chromecast built-in™, AirPlay and Alexa Multi-Room Music supported, the soundbar allows you to stream audio on smartphones or tablets through the soundbar speakers.

- 1) On the soundbar, enter the Wi-Fi setup mode:
  - Switch on the soundbar (see [“Power-on/Auto standby/Auto wakeup”](#)).
    - If the soundbar has not been connected to a network, the screen shows “**Setup Wi-Fi Music**” after initiation and language selection.
  - To reset network settings, tap **System Info** -> **Network** -> **Reset** and then confirm the reset operation.

- 2) On your Android or iOS device, add the soundbar to your home Wi-Fi network.

Select an app to complete Wi-Fi setup.

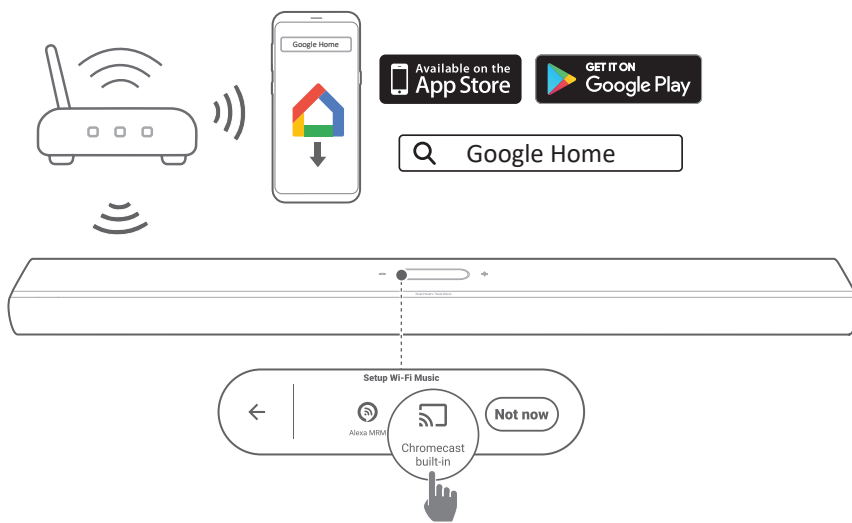


- **Google Home app:** for playback through Chromecast built-in™ and AirPlay
- **AirPlay speaker setup:** for playback through AirPlay only
- **An Amazon Echo device / Amazon Alexa app:** for playback through the Amazon Music, Alexa Multi-Room Music (MRM) and AirPlay

#### NOTES:

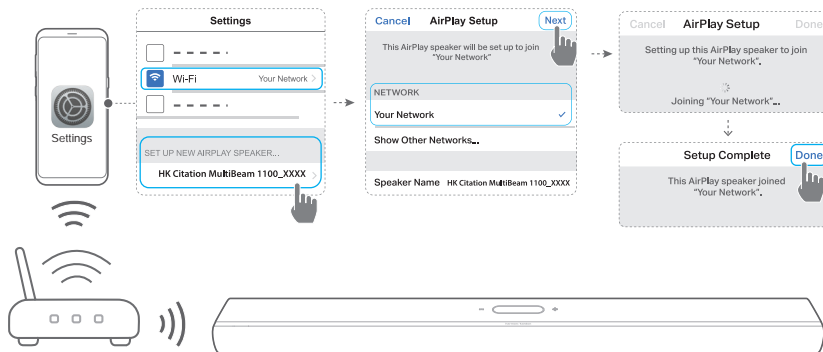
- **Apple AirPlay** is available after home network setup (iOS devices only).
- Some features require subscriptions or services not available in all countries.

### Wi-Fi setup through the Google Home app



- 1) Connect your Android or iOS device to your home Wi-Fi network. Download the Google Home app. Sign in with your Google account. If you do not have one, create a new one.
- 2) Follow the app instructions to complete setup.

### Wi-Fi setup through the AirPlay speaker setup



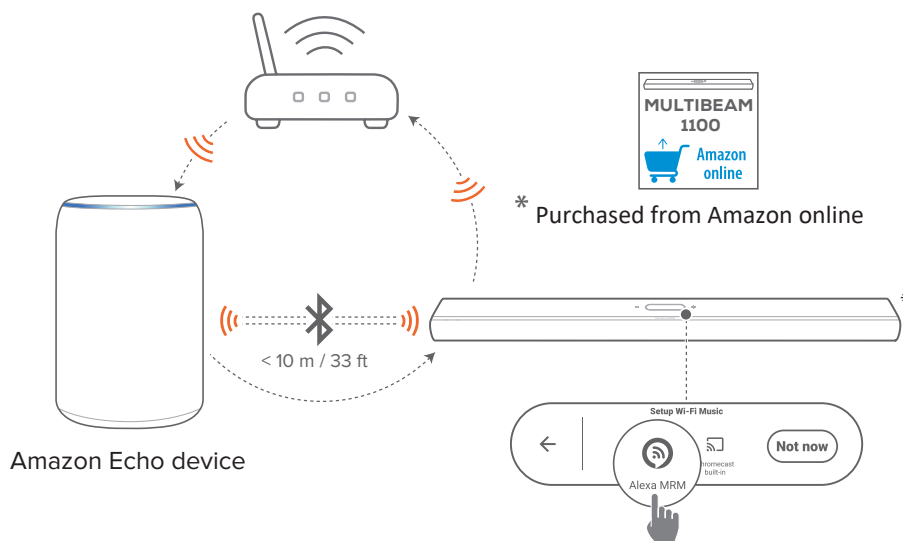
- 1) Connect your iOS device to your home Wi-Fi network.

- 2) On your iOS device, go to **Settings > W i-Fi**.  
Under **SET UP NEW AIRPLAY SPEAKER...**, select  
“**HK Citation MultiBeam 1100\_XXXX**” and follow onscreen  
instructions to complete setup.

### Automatic setup through an Amazon Echo device

To have the soundbar automatically join the same Wi-Fi network as your Amazon Echo device, make sure that:

You have purchased the soundbar from Amazon online with your Amazon account.





- 1) Check that you have connected your Amazon Echo device to your home Wi-Fi network.
- 2) During the Wi-Fi setup of your Amazon Echo device, you have saved the password of your home Wi-Fi network to Amazon.

**Enter your Wi-Fi network**

Wi-Fi Network Name  
Your Network

Enter your password  
Your Password

Save password to Amazon and allow eligible devices to use this password during setup. [Learn more](#)

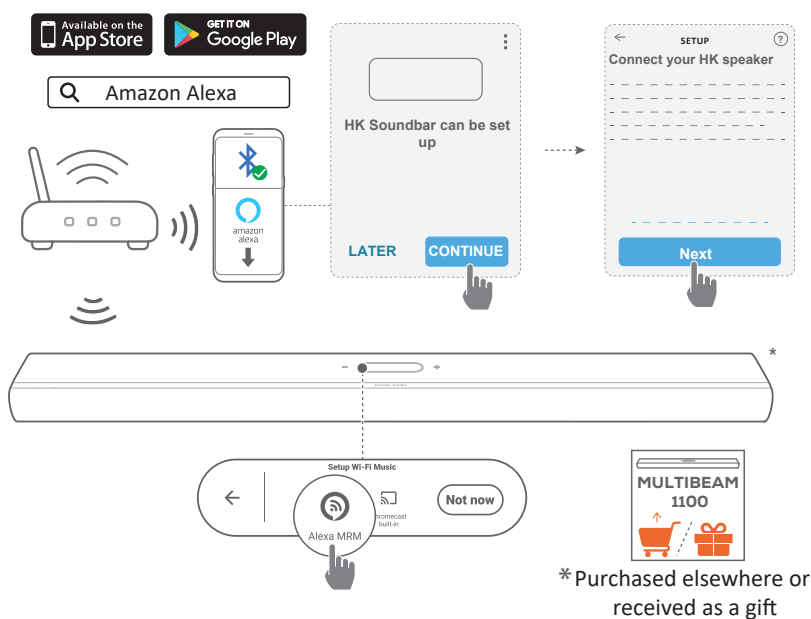
**CONNECT**

- 3) Enable Bluetooth on your Amazon Echo device, and place the soundbar within the Bluetooth range (10 m/ 33 ft).

### Wi-Fi setup through the Amazon Alexa app

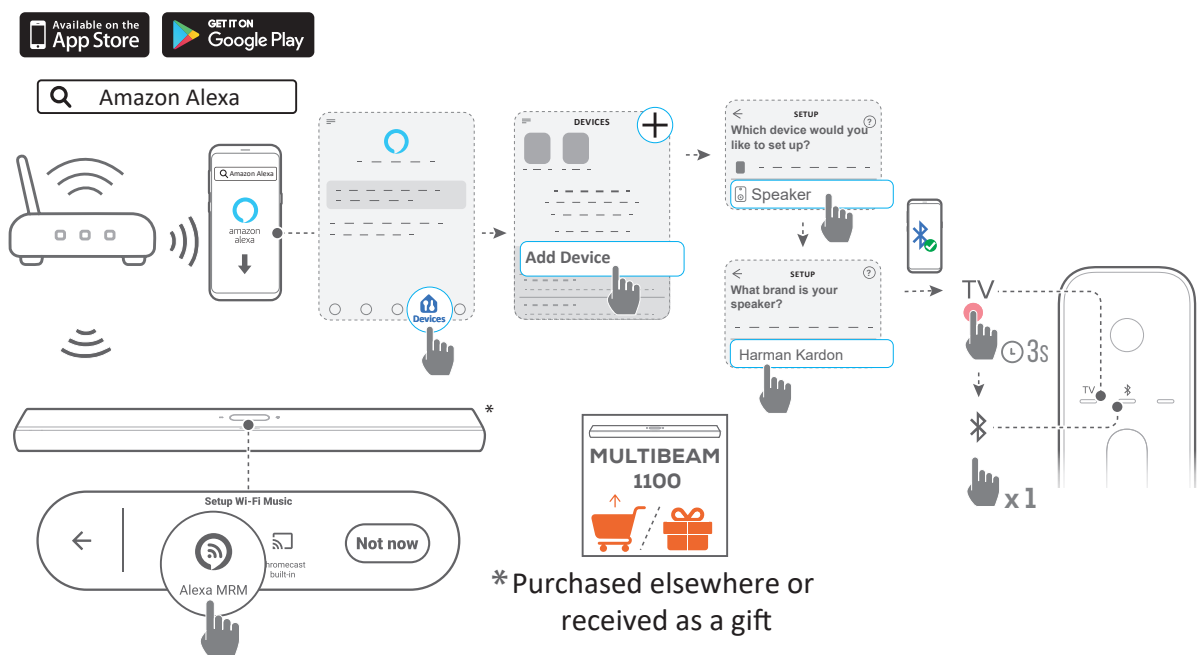
If your soundbar is purchased elsewhere or received as a gift, set up Wi-Fi through the Amazon Alexa app. You can have Alexa discover the soundbar automatically, or through the guided setup.


## Automatic discovery



- 1) Connect your Android or iOS device to your home Wi-Fi network. Download the Amazon Alexa app. Sign in with your Amazon account. If you do not have one, create a new one.
- 2) On your Android or iOS device, enable Bluetooth and launch the Amazon Alexa app.
  - The soundbar is automatically discovered by Alexa.
- 3) Follow the steps as shown above and the onscreen instructions to connect the soundbar to your home Wi-Fi network.

## Manual: Guided setup



- 1) Connect your Android or iOS device to your home Wi-Fi network. Download the Amazon Alexa app. Sign in with your Amazon account. If you do not have one, create a new one.
- 2) On your Android or iOS device, launch the Amazon Alexa app and follow the steps as shown above.
- 3) For the guided setup, enable Bluetooth on your Android or iOS device and have Alexa discover the soundbar by pressing TV for more than 3 seconds and then, pressing  on the remote control.
- 4) Follow the onscreen instructions to connect the soundbar to your home Wi-Fi network.

## Wired connection with your home network through an Ethernet cable (optional)


- After the Wi-Fi setup is complete, use an Ethernet cable to connect the soundbar to your home network.
- Make sure that you connect to the same network as you did during the setup.

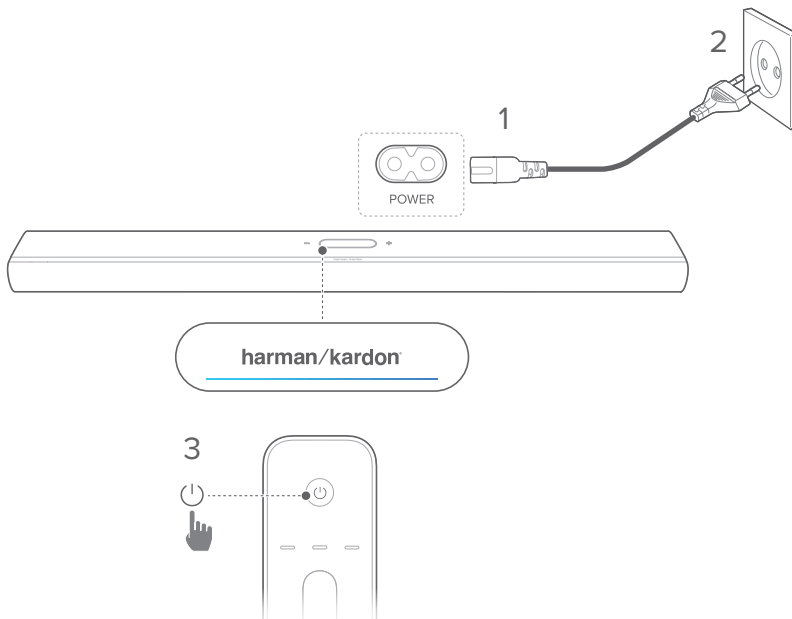
### NOTES:

- During the Wi-Fi setup through the Google Home app, you can name the soundbar and organize it by room.
- On your iOS device, add the soundbar to the Apple Home app and manage it together with other AirPlay compatible speakers.
- On your iOS device, if the soundbar has been added to your home Wi-Fi network through the Google Home app, skip the steps under "[Wi-Fi setup through the AirPlay speaker setup](#)" and you can start AirPlay streaming from an AirPlay-compatible app (See "[Play through AirPlay](#)").
- If the soundbar has been added to your home Wi-Fi network through the Google Home app or the AirPlay speaker setup, follow the onscreen instructions to sign in with your Amazon account.
- Availability of online music streaming services varies by country.

# / SETUP

## Power-on/Auto standby/Auto wakeup

- 1) Plug one end of the AC power cable into the **POWER** connector on the back of the soundbar.
- 2) Plug the other end of the power cable into a live AC (mains) outlet. The soundbar will automatically power on and the touch screen will turn on.
- 3) Alternatively, press  on the remote control to power on or switch to standby.



- 4) Follow on-screen instructions to complete first-time setup.

### NOTES:

- Use the provided power cable only.
- Before connecting the power cable, make sure all other connections have been completed.
- When you disconnect the power cable, always pull the plug, never the cable.
- Do not connect this product or other components to an AC outlet until all connections between components are complete.

## Auto standby

If the soundbar is inactive for more than 10 minutes, it will switch to standby mode automatically. Next time you switch on the soundbar, it returns to the last selected source.

## Auto wakeup

In standby mode, the soundbar will wake up automatically when

- the soundbar is connected to your TV through the HDMI ARC/eARC connection and your TV is switched on;
- the soundbar is connected to your TV through an optical cable and audio signals are detected from the optical cable;
- the soundbar is connected to your TV through the HDMI ARC/eARC connection and through the HDMI connection, is also connected to your digital device such as a set-top box, DVD/Blu-ray player or game console, and your digital device is switched on;
- the soundbar is connected to your home network and audio is streamed to the soundbar through Chromecast built-in, AirPlay or Alexa Music.

## Sound effect

### Sound calibration

You can optimize your 3D surround sound experience for your unique listening environment.

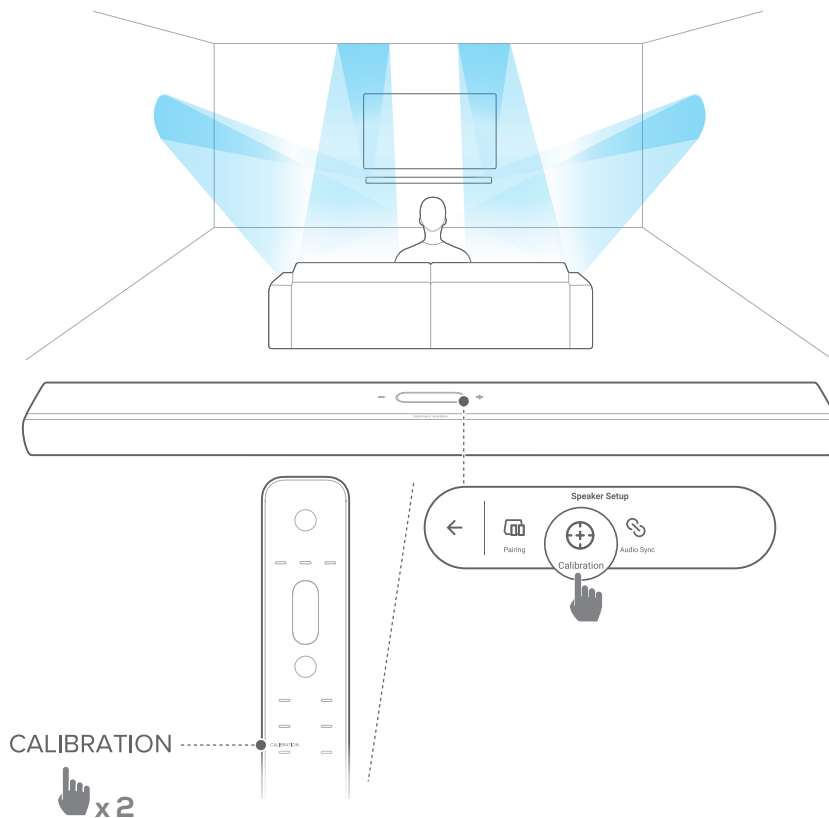
- On the remote control press **CALIBRATION** twice, or on the touch screen tap **Speaker setup** -> **Calibration**.

For sound calibration, do the following:

- Make sure that your room is quiet.
- Remove any obstacles from the front or sides of the soundbar.

For sound calibration with CITATION SURROUND (optional), do the following:

- Make sure that the soundbar and the two rear speakers are fully in sight of each other, without obstacles in between.
- Make sure that the left and right rear speakers are properly placed behind your listening position.



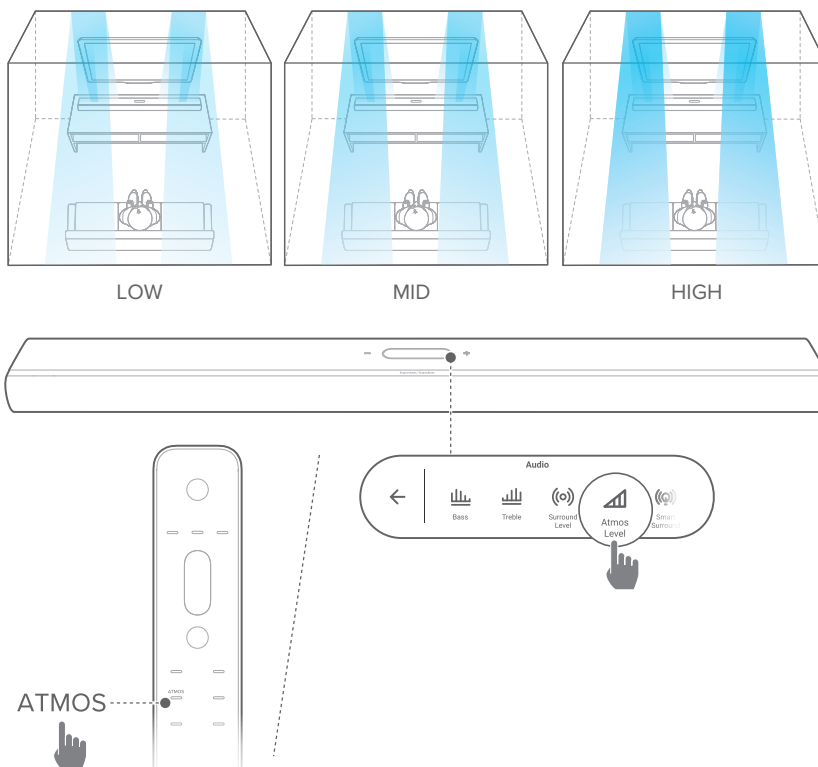
**NOTE:**

- If calibration fails, the LCD display will indicate to cancel or retry.
- During calibration, all buttons on the remote control are disabled except for  $\odot$ .

## Dolby Atmos®

With Dolby Atmos, enjoy height sound effects when you play movies in the TV/HDMI IN source.

- 1) Connect and play your Blu-ray player or streaming device through the HDMI ARC/HDMI eARC connector and the HDMI connector. (See [“Connection with your TV and digital devices”](#)).
- 2) Press **ATMOS** on the remote control, or tap **Audio** -> **Atmos** on the touch screen and then swipe up or down to select an Atmos level: 1, 2 (default) or 3.

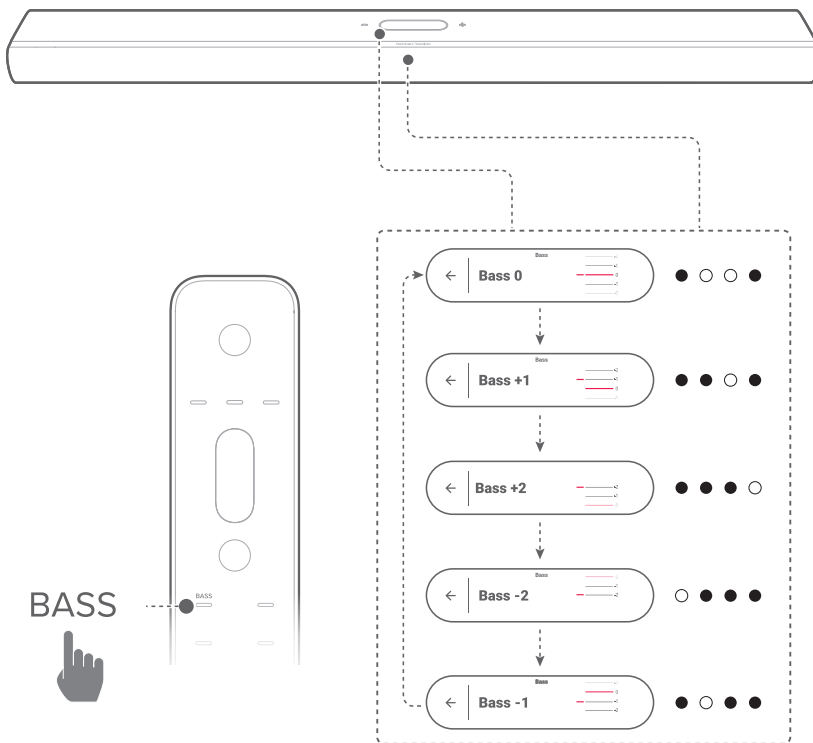




## Bass adjustment

You can adjust the bass level of the soundbar or subwoofer (if connected): Bass -2, Bass -1, Bass 0, Bass +1, or Bass +2

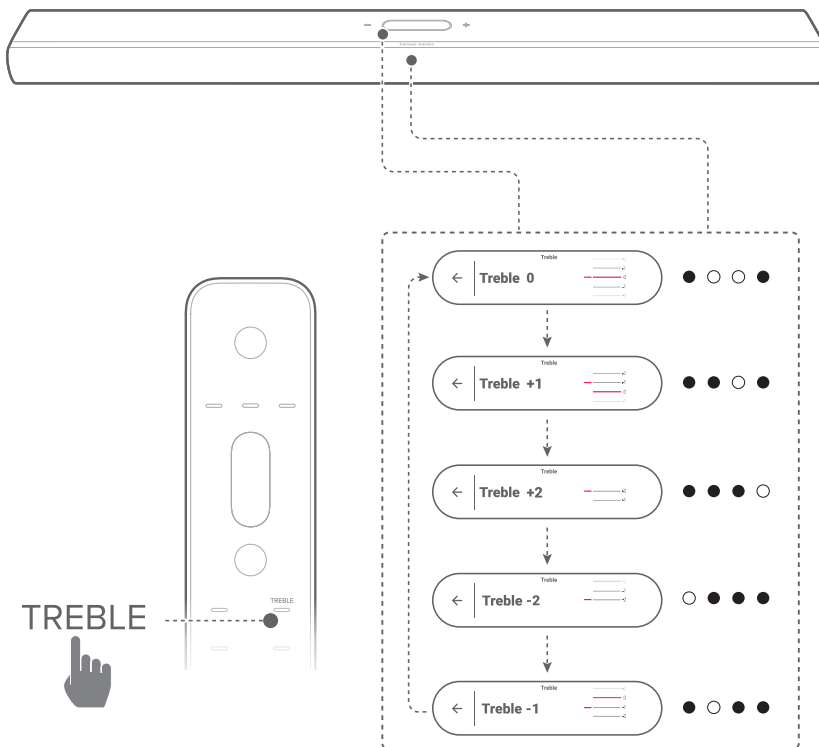
- Press **BASS** on the remote control, or tap **Audio** -> **Bass** on the touch screen and then swipe up or down to adjust the bass level.



## Treble adjustment

You can adjust the treble level of the soundbar: Treble -2, Treble -1, Treble 0, Treble +1, or Treble +2

- Press **TREBLE** on the remote control, or tap **Audio** -> **Treble** on the touch screen and then swipe up or down to adjust the treble level.



# / SETTING UP OTHER CITATION SPEAKERS (Optional)

You can wirelessly pair your Citation MultiBeam 1100 with:


- CITATION SUB (S) (subwoofer, sold separately): to enhance the bass performance;
- CITATION SURROUND (satellite speakers, sold separately): to enhance the surround sound experience;
- CITATION SUB (S) and CITATION SURROUND: to set up a 5.1.2 channel surround sound system

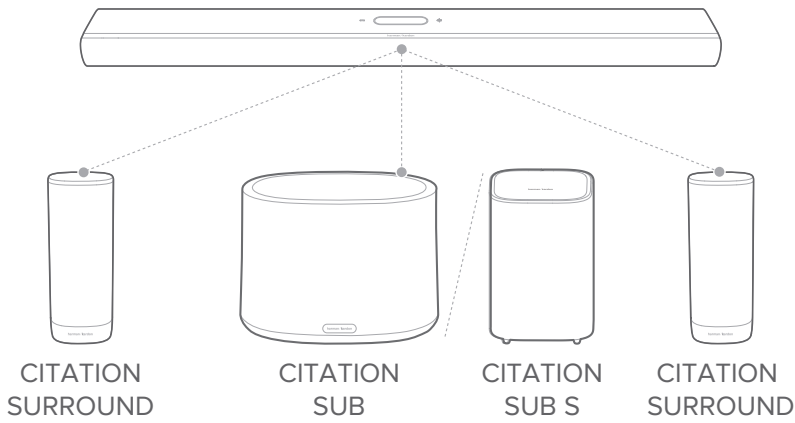
## NOTES:

- For a successful setup, keep a maximum distance of 5 meters (16.4 feet) between the Citation MultiBeam 1100 and your CITATION SUB (S) or CITATION SURROUND.
- If the soundbar is powered off, the satellite speakers or subwoofer will enter standby mode.
- If you use a device that uses the same frequency (2.4GHz or 5GHz) as the soundbar near your soundbar, interference may cause some sound interruption.
- The maximum transmission distance of the wireless signal between the soundbar and satellite speakers or subwoofer may vary depending on your operating environment.




- 1) Power on your Citation MultiBeam 1100, CITATION SUB (S), or / and CITATION SURROUND.
- 2) On the CITATION SUB (S), or / and CITATION SURROUND, press **RESET** to enter pairing mode.
- 3) On the Citation MultiBeam 1100, tap **“Speaker Setup”** > **“Pairing”** on the touch screen to enter pairing mode.
  - The soundbar will search for CITATION SUB, or / and CITATION SURROUND.
  - You will hear a pairing chime once successfully connected and **“Surround setup successful”** or **“Subwoofer connected”** will be displayed on the touch screen.

→ If no speakers are found, make sure to power on each speaker and retry the setup.

- 4) To remove the setup, tap  and confirm your operation in the popup confirmation box.



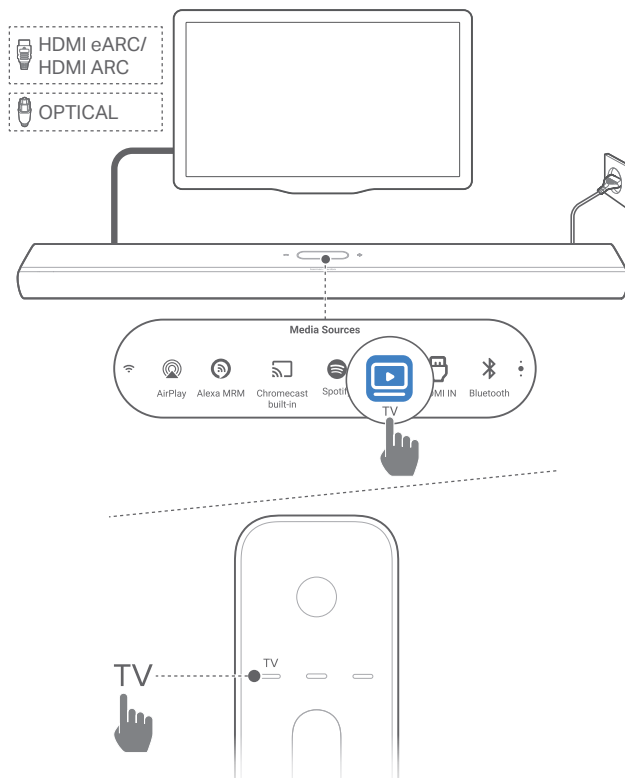
**LED Indicator (CITATION SUB (S) / CITATION SURROUND)**

	White (Flashing)	Pairing
	White (Flashing)	Out of range / Lost wireless connection
	White (Constant for 10 seconds and then light off)	Wirelessly connected with Citation MultiBeam 1100

# / PLAY

## Play from the TV source

With the soundbar connected as shown, you can enjoy TV audio from the soundbar.



- 1) Make sure that your TV is set to support external speakers and the built-in TV speakers are muted. Refer to the owner's manual of your TV for more information.
- 2) Make sure that the soundbar has been properly connected to your TV (See "[Connection with your TV and digital devices](#)").
- 3) To select the TV source, press **TV** on the remote control or tap **TV** on the touch screen.

### NOTE:

- If the soundbar is connected to your TV through both an HDMI cable and an optical cable, the HDMI cable source is selected for the TV connection.

## TV remote control setup

To use your TV remote control for both your TV and the soundbar, check that your TV supports HDMI-CEC. If your TV does not support HDMI-CEC, follow the steps under [“TV remote control IR learning”](#).

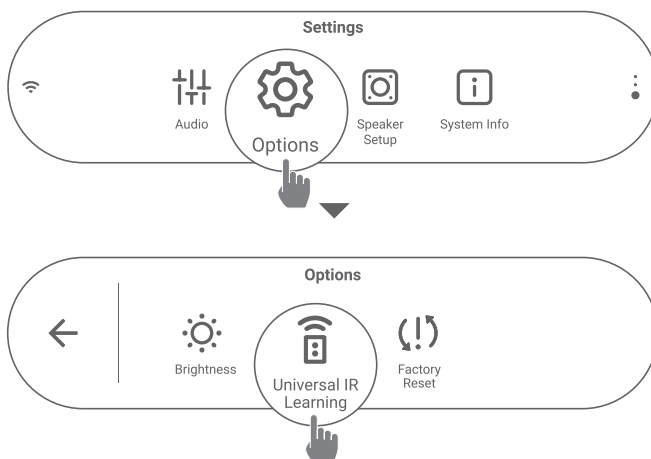
### HDMI-CEC

If your TV supports HDMI-CEC, enable the functions as instructed in your TV user manual. You can control the volume +/-, mute/unmute, and power on/standby functions on your soundbar through the TV remote control.

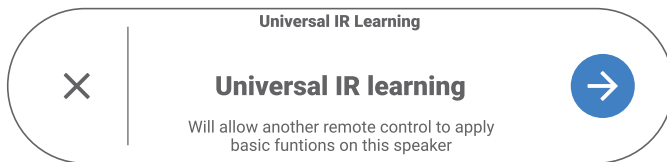
### TV remote control IR learning

Through IR learning, your Infra-red TV remote control can learn some commands of the soundbar.

- 1) On the touch screen, swipe to the **Settings** page, then tap **Options -> Universal IR Learning**.



- 2) Tap → to start the Universal IR learning on your TV remote control.



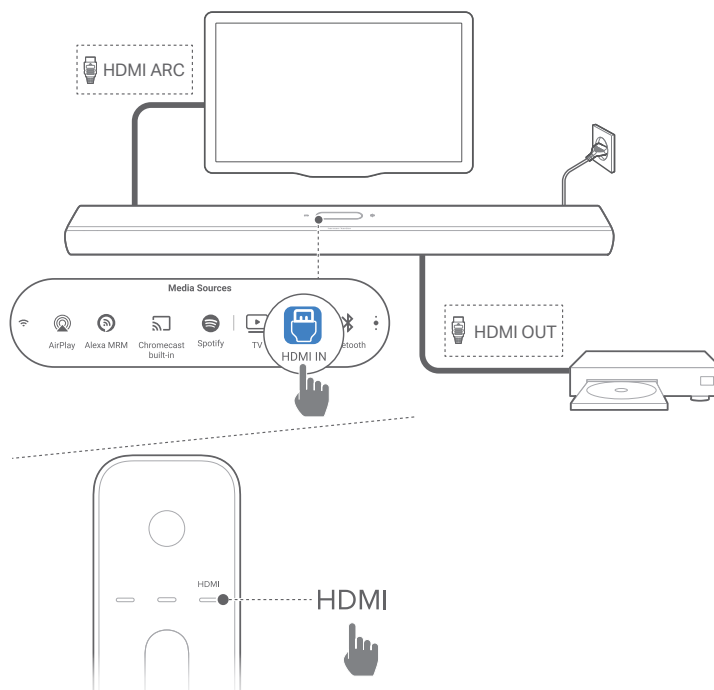
- 3) Point your TV remote control at the soundbar. Follow the screen instructions to operate the buttons on your TV remote control.

**NOTE:**

- The source selector on your TV remote control can only select the devices that are directly connected to the TV, not the soundbar.

## Play from the HDMI IN source

With the soundbar connected as shown, you can play video from your digital device on your TV, with sound output from the soundbar.



- 1) Make sure that the soundbar has been properly connected to your TV and digital device (See [“Connection with your TV and digital devices”](#)).
- 2) Switch on your digital device.
  - Your TV and the soundbar wake up from standby mode and switch to the input source automatically.
    - To select the **HDMI IN** source on the soundbar, press **HDMI** on the remote control or tap **HDMI IN** on the touch screen.



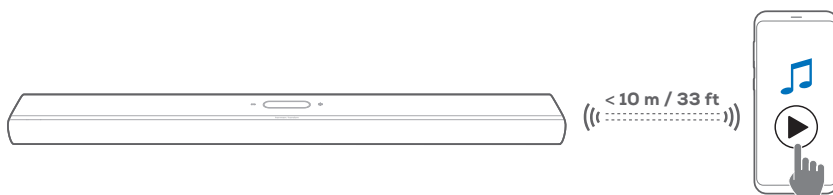
- 3) Switch your TV to standby mode.
  - The soundbar and source device are switched to standby mode.

**NOTE:**

- Full compatibility with all HDMI-CEC devices is not guaranteed.

## Play from the Bluetooth source

Through Bluetooth, you can stream music from your Bluetooth device to the soundbar.




- 1) Check that the soundbar has been properly connected to your Bluetooth device (See [“Bluetooth connection”](#)).
- 2) To select the Bluetooth source, press **⌘** on the remote control or tap **Bluetooth** on the touch screen.
- 3) Start audio playback on your Bluetooth device.
- 4) Adjust the volume on the soundbar or your Bluetooth device.

## Play through Chromecast built-in

Through Chromecast built-in, stream audio from your Android or iOS device to the soundbar.

- 1) On the soundbar,
  - Check that the soundbar has been properly connected to your home network (See [“Connection with your home network”](#)).


- 2) On your Android or iOS device,
  - a) Check that your Android or iOS device has been connected to the same network as the soundbar.
  - b) On a Chromecast-enabled app, play music, tap the cast icon  and select the connected soundbar.

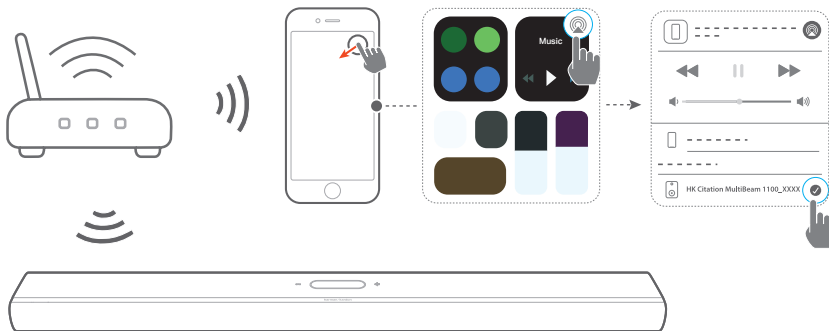


- 3) To exit from the music playback, switch to other sources.

## Play through AirPlay

Through AirPlay, stream audio from your iOS device to the soundbar.

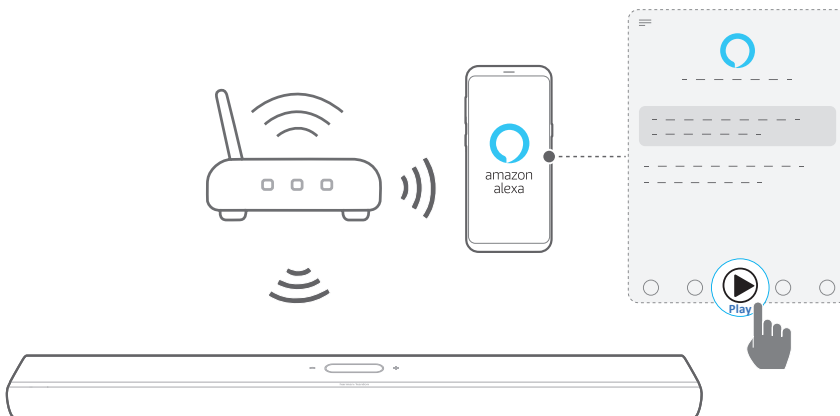
- 1) On the soundbar,
  - Check that the soundbar has been properly connected to your home network (See [“Connection with your home network”](#)).
- 2) On your iOS device,
  - a) Check that your iOS device has been connected to the same network as the soundbar.
  - b) To enter the Control Center on an iOS device, swipe down from the upper right corner or swipe up from the bottom edge (iOS 11 or earlier). Tap  to select the connected soundbar and then, start audio streaming from an app.



3) To exit from the music playback, switch to other sources.

## Play through Amazon Music

With the soundbar connected to Alexa, you can stream music from the Amazon Music library to the soundbar.



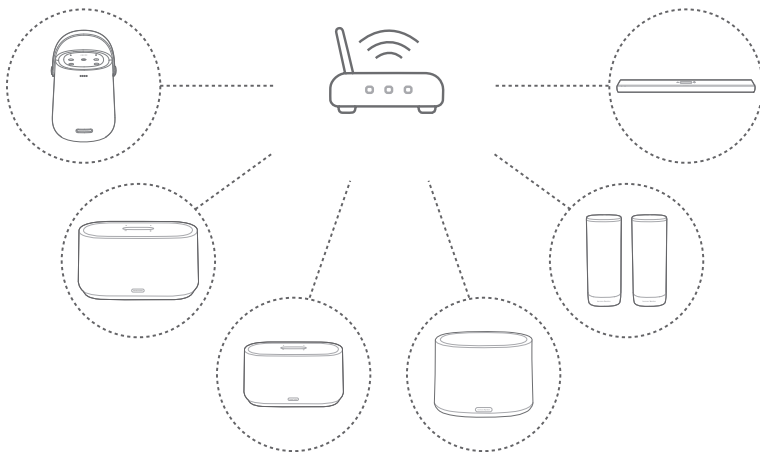
- 1) Check that the soundbar has been properly connected to the Amazon Alexa app (See [“Wi-Fi setup through the Amazon Alexa app”](#)).
- 2) Launch the Amazon Alexa app to start music playback.
  - Open the Amazon Music app to access the Amazon Music library.
  - Refer to the Amazon Alexa app for more details.

**NOTES:**


- The soundbar can support audio streaming but cannot support video streaming.
- During playback through Chromecast built-in, AirPlay or Alexa, music playback pauses on the current connected device when you start music playback on a second connected device.
- When the soundbar switches between your home Wi-Fi and wired network during AirPlay, music playback pauses and will resume in a few minutes, depending on the bandwidth condition of broadband. For the connection to your home wired network, see [“Wired connection with your home network through an Ethernet cable \(optional\)”](#).

## Multi-room playback

With the multi-room playback, you can stream music from your Android or iOS device to multiple Chromecast-enabled/ AirPlay / Alexa speakers.



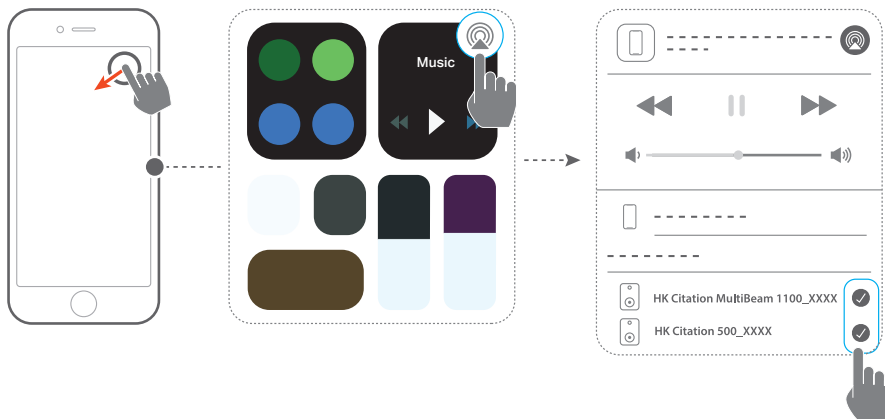
## Chromecast built-in


- 1) Through the Google Home app, connect multiple Chromecast-enabled speakers to the same network, assign them to multiple rooms, and create groups as needed.
- 2) Run a Chromecast-enabled app on your smartphone or tablet.
- 3) Play music. Press  and select the grouped speakers.

### NOTES:

- Refer to the Google Home app for more details.
- Depending on the bandwidth of your local network, you can stream music to up to 6 Chromecast-enabled speakers.

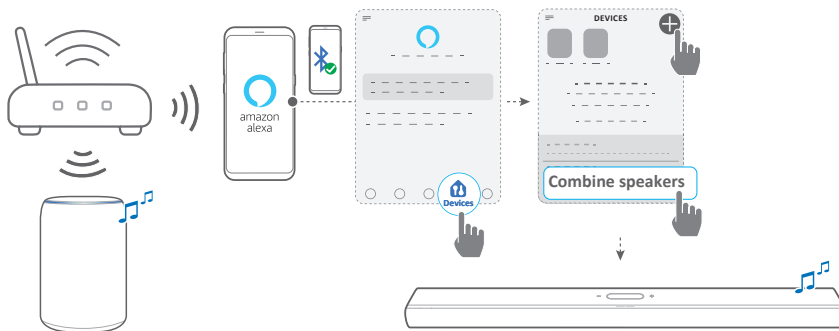
## AirPlay



- 1) On an iOS device, enter the Control Center.
- 2) Tap  to select multiple connected speakers as needed.
- 3) Start music streaming from an app.

## Alexa Multi-Room Music

- 1) Check that you have associated the soundbar with your Amazon account through the Amazon Alexa app (See [“Wi-Fi setup through the Amazon Alexa app”](#)).
- 2) Through the Amazon Alexa app, create a Multi-room Music group for the soundbar. Refer to the Amazon Alexa app for more information.



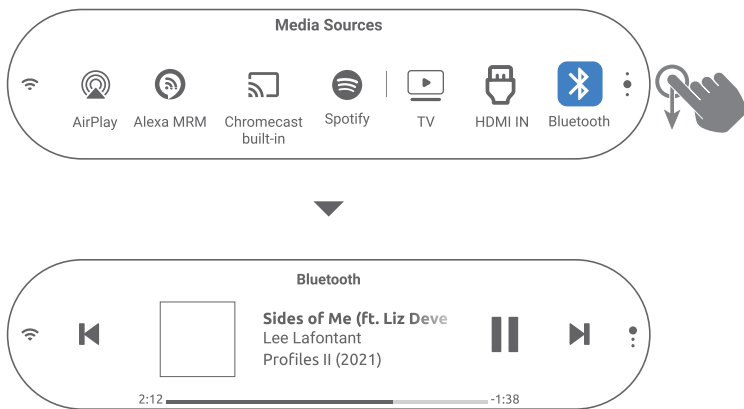
- 3) During music streaming through Alexa MRM, press **PLAY/PAUSE** on the remote control to pause music streaming. Press the button again to resume.

### NOTE:

- Refer to the Amazon Alexa app for more details.

## Music playback control on touchscreen

- 1) During music playback, you can swipe down to switch from the source screen to the player screen.



- 2) Tap icons on the player screen to pause / resume playback or skip to the previous/next track.

# / SOUND SETTINGS

## NOTE:

- For bass/treble adjustment, see "[Bass adjustment](#)" and "[Treble adjustment](#)"

## Smart Surround

With smart surround enabled by default, you can enjoy TV programs with rich sound effects. For TV programs such as news and weather forecasts, you can reduce sound effects by disabling smart surround and switching to the standard mode.

- On the touch screen, swipe to the **Settings** page, then tap **Audio -> Smart Surround** to enable or disable Smart Surround.
- When Smart Surround is enabled, EQ settings and MultiBeam surround sound are applied on the TV input.
- When Smart Surround is disabled, the standard EQ is applied.

## NOTES:

- When there are no Citation Surround speakers connected to the soundbar, you can also press **SURROUND** on the remote control to enable or disable Smart Surround.
- Next time you switch on the soundbar, Smart Surround is enabled again automatically.

## Audio Sync

With the audio sync function, you can synchronize audio and video to make sure that no delay is heard from your video content.


- 1) On the touchscreen, swipe to the **Settings** page, then tap **Speaker Setup -> Audio Sync**.
- 2) Swipe up or down to select the audio delay that matches with video.



## Night Mode

You can enable this feature to decrease the volume of loud sound automatically (available only for Dolby Digital soundtracks).

To enable or disable night mode:

- On the remote control, hold  for 3 seconds, then press **VOL -**.
- Or on the touch screen, swipe to the **Settings** page, then tap **Audio -> Night Mode**.

## PureVoice

You can enable this feature to enhance vocal clarity and easily hear and understand speech.

- On the touchscreen, swipe to the **Settings** page, then tap **Audio -> PureVoice** to enable or disable pure voice.

### NOTE:

- Next time you switch on the soundbar, PureVoice is enabled again automatically.

# / RESTORE FACTORY SETTINGS

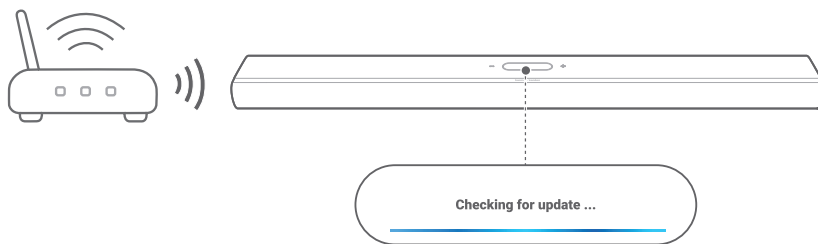
By restoring the default settings defined at factories, you remove all your personalized settings from the soundbar.

- On the back of the soundbar, press and hold **RESET** for more than 5 seconds.
- Or on the touchscreen, swipe to the **Settings** page, then tap **Options** -> **Factory reset** and confirm in the submenu.

# / SOFTWARE UPDATE

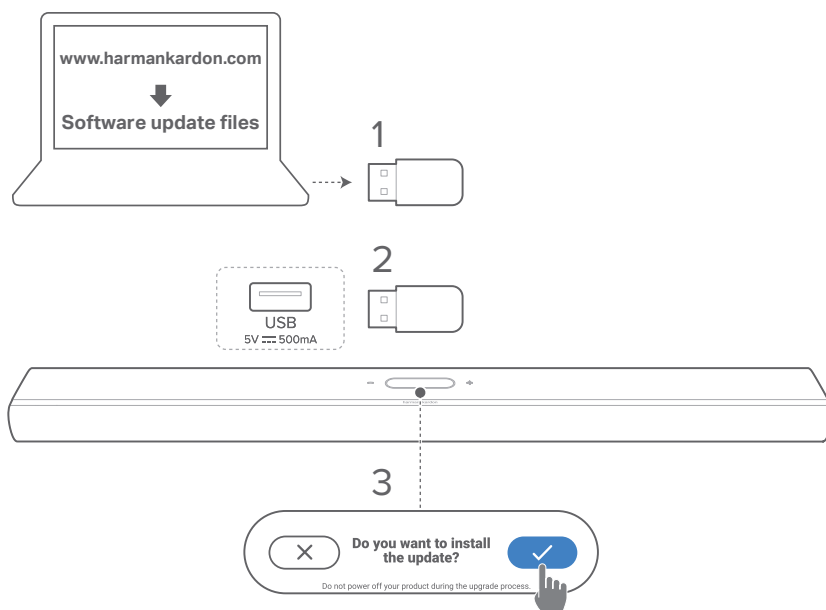
For optimal product performance and your best user experience, Harman Kardon may offer software updates for the soundbar system in the future. Please visit [www.harmankardon.com](http://www.harmankardon.com) or contact Harman Kardon call center to receive more information about downloading update files.

## Updating online



- Connect the soundbar to your home network. Updating online happens automatically if software updates are available.
  - **“Updating”**: Software updating underway
  - The soundbar restarts automatically after successful software update.

## Updating through a USB storage device



- 1) Check that you have saved the software update file to the root directory of a USB storage device.
- 2) Connect the USB device.
  - A confirmation box appears after the soundbar detects the update file automatically.
- 3) Confirm to start the update process.
  - **"Updating"**: Software updating underway
  - The soundbar restarts automatically after successful software update.

### NOTE:

- Keep the soundbar powered on and the USB storage device plugged in until the software updating is complete.

# PRODUCT SPECIFICATIONS

## General Specification

- Model: CITATION MULTIBEAM 1100
- Power supply: 100 – 240 V AC, ~ 50/60 Hz
- Total speaker power output (Max @THD 1%): 630 W
- Soundbar output power (Max @THD 1%): 8 x 60 W woofer and full-range + 3 x 50 W tweeter
- Soundbar transducer: 6x (55 x 90) mm racetrack drivers, 3x 1" (25 mm) tweeters, 2x 2.75" (70 mm) up-firing full-range drivers
- Networked standby power: < 2.0 W
- Operating temperature: 0 °C – 45 °C

## HDMI Specification

- HDMI video input: 1
- HDMI video output (with Enhanced Audio Return Channel, eARC): 1
- HDMI HDCP version: 2.3
- HDR: HDR10, Dolby Vision

## Audio Specification

- Frequency response: 52 Hz – 20 kHz (-6 dB)
- Audio inputs: 1 Optical, Bluetooth, Chromecast built-in, AirPlay, Alexa MRM

## USB specification:

- USB port: Type A (For service only)
- USB rating: 5 V DC, 0.5 A

### Wireless specification

- Bluetooth version: 5.0
- Bluetooth profile: A2DP 1.2, AVRCP 1.5
- Bluetooth transmitter frequency range: 2400 MHz – 2483.5 MHz
- Bluetooth transmitter power: < 13 dBm (EIRP)
- Wi-Fi network: IEEE 802.11 a/b/g/n/ac (2.4GHz/5GHz)
- 2.4G Wi-Fi transmitter frequency range: 2412 – 2472 MHz (2.4 GHz ISM Band, USA 11 Channels, Europe and others 13 Channels)
- 2.4G Wi-Fi transmitter power: < 19 dBm (EIRP)
- 5G Wi-Fi transmitter frequency range: 5.15 – 5.35 GHz, 5.470 – 5.725 GHz, 5.725 – 5.825 GHz
- 5G Wi-Fi transmitter power: < 20 dBm (EIRP)
- 5G WISA transmitter frequency range: 5.15 - 5.35 GHz, 5.470 – 5.725 GHz, 5.725 – 5.825 GHz
- 5G WISA transmitter power: < 14 dBm (EIRP)

### Dimensions

- Dimensions (W x H x D): 1150 x 65 x 130 mm / 45.2" x 2.6" x 5.1"
- Weight: 4.6 kg / 10.1 lbs
- Packaging dimensions (W x H x D): 1250 x 160 x 190 mm / 49.2" x 6.3" x 7.5"
- Packaging Weight: 7.2 kg / 15.9 lbs

# / TROUBLESHOOTING

Never try to repair the product yourself. If you have problems using this product, check the following points before you request services.

## System

### **The unit will not turn on.**

- Check if the power cable is plugged into power and the soundbar.

### **The soundbar has no response to button pressing.**

- Restore the soundbar to factory settings (See [“RESTORE FACTORY SETTINGS”](#)).

## Sound

### **No sound from soundbar**

- Make sure that the soundbar is not muted.
- Select the correct audio input source on the remote control.
- Connect the soundbar to your TV or other devices properly
- Restore the soundbar to its factory settings (See [“RESTORE FACTORY SETTINGS”](#)).

### **Distorted sound or echo**

- If you play audio from your TV through the soundbar, make sure that your TV is muted or the built-in TV speaker is disabled.

### **Audio and video are not synchronized.**

- Enable the audio sync function to synchronize audio and video (See [“Audio Sync”](#)).

### No height sound effects of Dolby Atmos

- If your TV supports HDMI ARC only, make sure that you have connected your digital device to the soundbar through the HDMI IN connector on the soundbar (See [“HDMI ARC”](#)).
- Enjoy the sound effects of Dolby Atmos when you play movies from the TV / HDMI source. For audio streaming over Bluetooth or casting apps (enabled by Chromecast built-in, AirPlay or Alexa), Dolby Atmos is not supported.

### Sound calibration fails.

- Reduce the background noise in your listening area.

### The Citation Surround Speakers are paired, but are playing the wrong channels.

- In the **Speaker Setup** menu, find the Citation Surround speakers. Press the “play” button on each speaker to hear a test tone and confirm the surround left and right speakers. If the channels are incorrect, then press the center icon to switch the channels.

## Bluetooth

### A device cannot be connected with the soundbar.

- Check if you have enabled Bluetooth on the device.
- If the soundbar has been paired with another Bluetooth device, reset Bluetooth (See [“To connect to another Bluetooth device”](#)).
- If your Bluetooth device has ever been paired with the soundbar, reset Bluetooth on the soundbar, unpair the soundbar on the Bluetooth device, and then, pair the Bluetooth device with the soundbar again (See [“To connect to another Bluetooth device”](#)).



### Poor audio quality from a connected Bluetooth device

- The Bluetooth reception is poor. Move the source device closer to the soundbar, or remove any obstacle between the source device and the soundbar.

### The connected Bluetooth device connects and disconnects constantly.

- The Bluetooth reception is poor. Move the source device closer to the soundbar, or remove any obstacle between the source device and the soundbar.

## Wi-Fi

### Failed to connect to Wi-Fi

- Make sure that Wi-Fi is turned on.
- Make sure that you have selected the right network and entered the correct password.
- Make sure that your router or modem is turned on and within the range.
- In your router settings, make sure that you have set the security type to WPA2 or auto.
- Make sure that your soundbar is connected to the same wireless LAN as your smartphone or tablet.
- If you have difficulties in setting up Wi-Fi, tap **System Info** -> **Network** -> **Reset** and then confirm to reset Wi-Fi.
- On the soundbar that you have connected to Wi-Fi through the AirPlay speaker setup on an iOS device, make sure that you connect the soundbar to the same Wi-Fi network when you set up Chromecast built-in through the Google Home app, or Alexa through the Amazon Alexa app.

**The Google Home app cannot find the device.**

- Make sure that your soundbar is powered on.
- Make sure that your network is working properly.
- Make sure that your router or modem is powered on and within the range.

**The Amazon Alexa app cannot find the device.**

- Follow the steps under “[Manual: Guided setup](#)”. You will allow Alexa to discover the soundbar.

## Playback

**Music playback does not work smoothly when the sound source switches from Bluetooth to Chromecast built-in, AirPlay or Alexa.**

- The quality of audio casting and playback are dependent on the traffic and coverage of the network that connects the soundbar and your casting devices, such as phones, tablets and PCs.

**Music playback does not resume when the sound source switches from Bluetooth to TV/HDMI IN, and then back to Bluetooth.**

- The music playback in the Bluetooth device stops when the sound source switches from Bluetooth to TV / HDMI IN. When you switch back to the Bluetooth source, start music playback in the Bluetooth device again.

**The soundbar is in the “Offline” status in the Amazon Alexa app or issues happen to Alexa MRM-related playback.**

- To recover the soundbar, restore the soundbar to its factory settings (See “[RESTORE FACTORY SETTINGS](#)”).

## Remote control

### The remote control does not work.

- Check if the batteries are drained. If so, replace them with new ones.
- Reduce the distance and angle between the remote control and the main unit.

### Failed to complete the TV remote control learning

- Check if you are using an infra-red TV remote control. The IR learning is not supported by a Bluetooth TV remote control.

# / TRADEMARKS



The Bluetooth® word mark and logos are registered trademarks owned by Bluetooth SIG, Inc. and any use of such marks by HARMAN International Industries, Incorporated is under license. Other trademarks and trade names are those of their respective owners.



The terms HDMI, HDMI High-Definition Multimedia Interface, and the HDMI Logo are trademarks or registered trademarks of HDMI Licensing Administrator, Inc.



The Wi-Fi CERTIFIED™ Logo is a certification mark of the Wi-Fi Alliance®.



Dolby, Dolby Vision, Dolby Atmos, and the double-D symbol are registered trademarks of Dolby Laboratories Licensing Corporation. Manufactured under license from Dolby Laboratories. Confidential unpublished works. Copyright © 2012–2020 Dolby Laboratories. All rights reserved.



Google, Android, Google Play, Chromecast built-in and other marks are trademarks of Google LLC.



Use of the Works with Apple badge means that an accessory has been designed to work specifically with the technology identified in the badge and has been certified by the developer to meet Apple performance standards. Apple, and AirPlay are trademarks of Apple Inc., registered in the U.S. and other countries. To control this AirPlay 2-enabled speaker, iOS 11.4 or later is required.



Amazon, Echo, Alexa, and all related logos are trademarks of Amazon.com, Inc. or its affiliates.



Use your phone, tablet or computer as a remote control for Spotify. Go to [spotify.com/connect](https://www.spotify.com/connect) to learn how. The Spotify Software is subject to third party licenses found here: <https://www.spotify.com/connect/third-party-licenses>.

**harman / kardon**<sup>®</sup>  
by HARMAN